

# BANK OF OKLAHOMA

201 Robert S. Kerr, Oklahoma City, OK

## OFFICE SPACE FOR LEASE



Price Edwards & Company  
210 Park Ave. Suite 700  
Oklahoma City, OK 73102  
Phone: (405) 843-7474  
Fax: (405) 236-1849  
www.priceedwards.com



### Building Profile

- Constructed in 1972
- 212,816 rentable square feet (RSF)
- 17 levels
- 73 lower level parking spaces
- 298 parking spaces in the adjacent garage
- Typical Floors are approximately 9,500 RSF
- (5) 3,000 lb capacity passenger elevators

### Features and Services

#### Common Areas

- The soaring lobby area features marble floors and attractive wall coverings
- Upper floor lobbies and corridors feature attractive carpeting and vinyl wall covering
- Common restrooms have been modified with ADA adjustments and feature ceramic tile floors and laminate countertops
- card key accessibility with closed circuit cameras monitor key access points

#### Tenant Spaces

- Optimum layout flexibility with column free upper floors
- 8'6" finished ceiling height
- 7'10" tall vertically banded glass



### Amenities

- On-site delicatessen
- Accessible to the downtown "Underground" pedestrian walkways
- Rapid and easy access to entire city and downtown area
- Fully automated sprinkler system
- Attractive and enjoyable outdoor plaza
- Covered private & public parking
- High speed internet available
- On-site security guard

### FOR MORE INFORMATION, CONTACT:

Craig Tucker [ctucker@priceedwards.com](mailto:ctucker@priceedwards.com) Tom Fields [tfields@priceedwards.com](mailto:tfields@priceedwards.com)

**(405) 843-7474**

# BANK OF OKLAHOMA

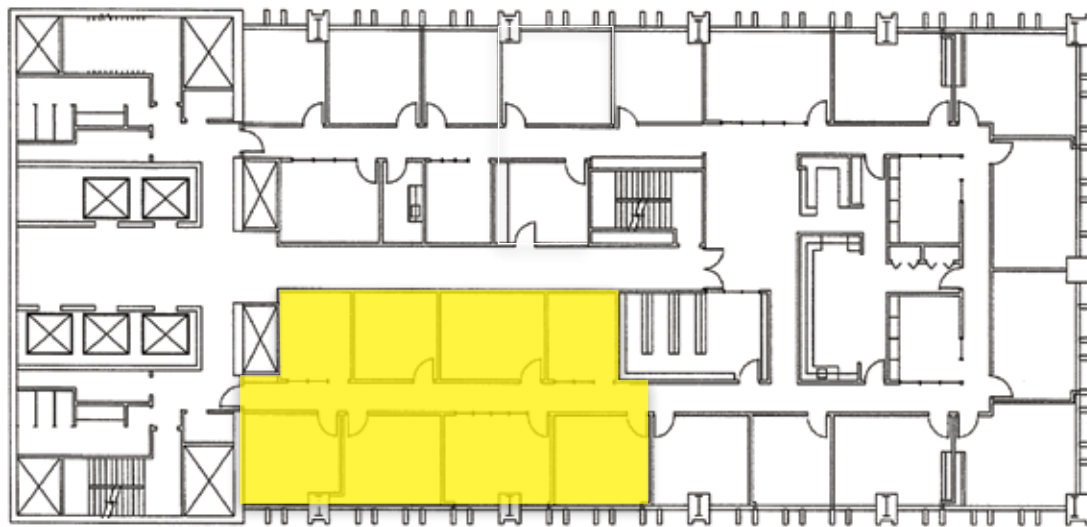
201 Robert S. Kerr, Oklahoma City, OK

OFFICE SPACE FOR LEASE



Price Edwards & Company  
210 Park Ave. Suite 700  
Oklahoma City, OK 73102  
Phone: (405) 843-7474  
Fax: (405) 236-1849  
www.priceedwards.com

Suite 601  
±2,038 RSF



Downtown OKC "Underground" Map